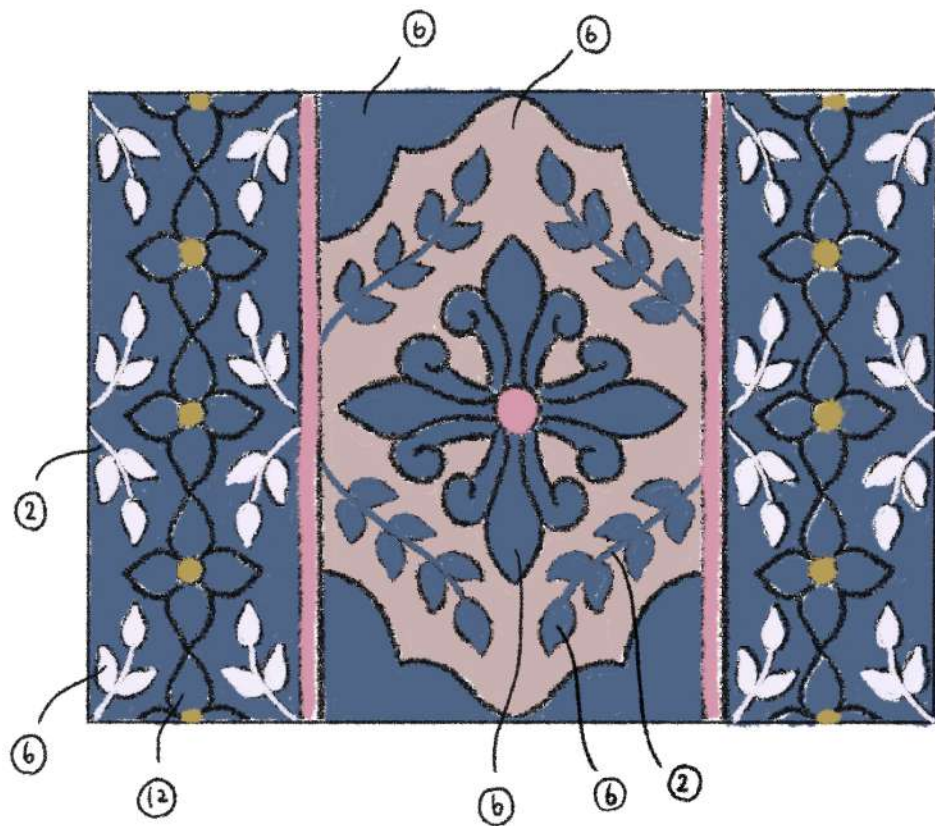


L'atelier Sfil EMBROIDERY



- Olympus 314
- Olympus 731
- white beads (M)
- DMC 06
- white beads (S)

Embroidery thread
糸の本数

- ② 2 strands (2本取り)
- ⑥ 6 strands (6本取り)
- ⑫ 12 strands (12本取り)

embroidery
L'atelier Sfil

☺ <http://a-sfil.work>

📷 @latelier_sfil
© sfil.work
© sfil.embroidery